

**Repair  
Parts  
List**

MODEL NUMBER  
MAH14PDAGW

**WASHER  
MAH14 1**

When requesting service or ordering parts, always provide the following information:

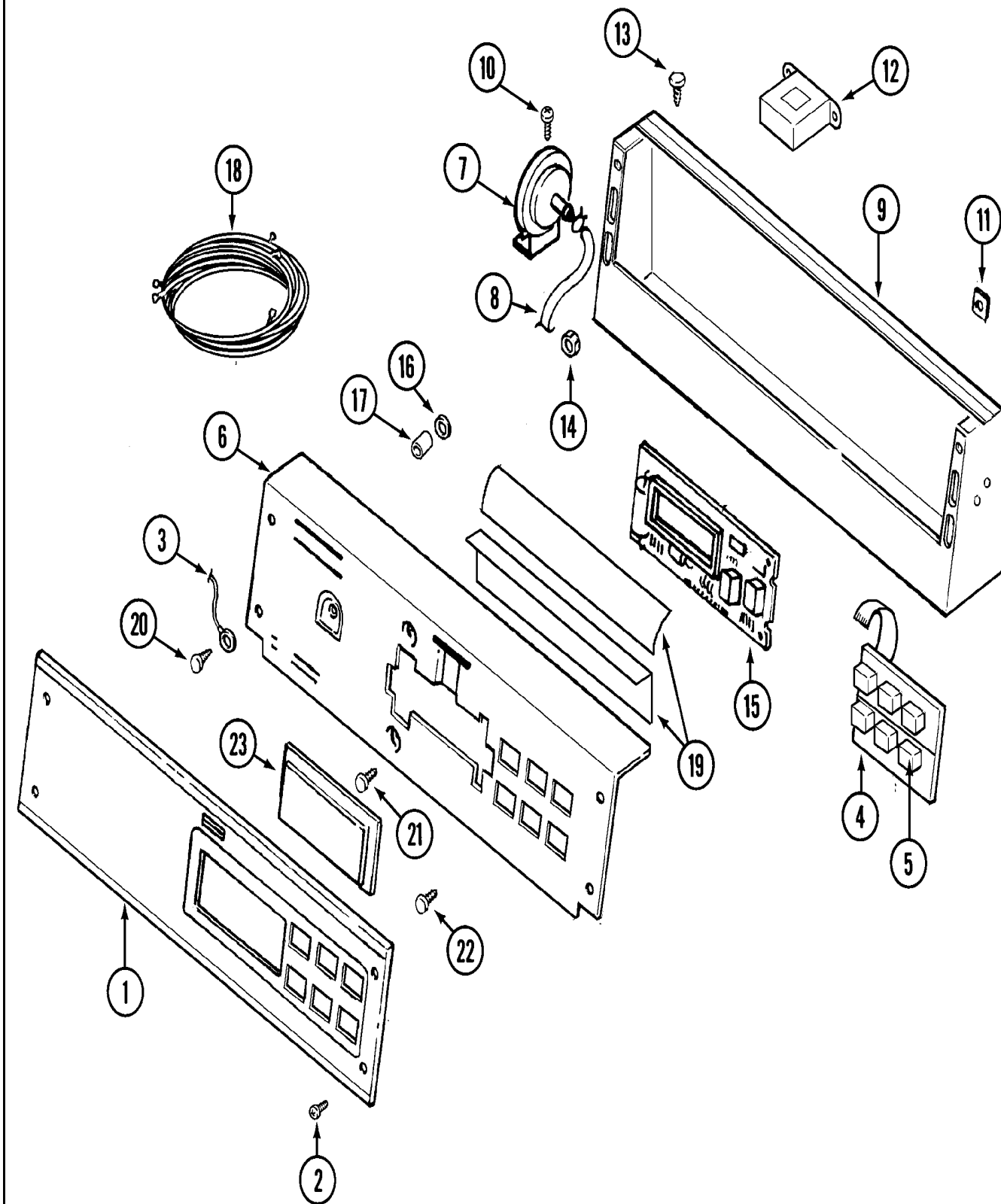
- **Product Type**
- **Part Number**
- **Model Number**
- **Part Description**

**MAYTAG**®

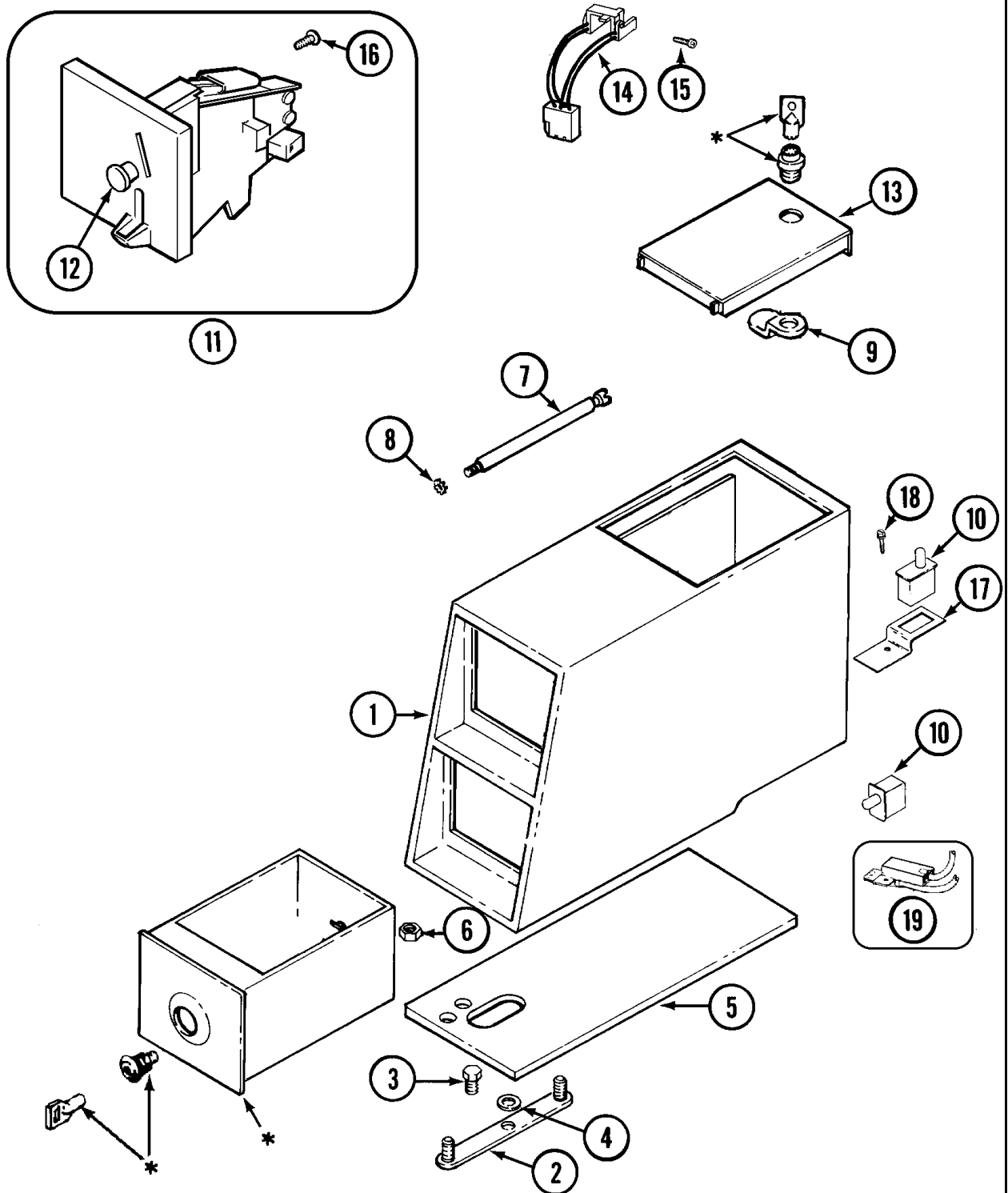
©2005 Maytag Services

Section: CONTROL PANEL

MAH14 1 P1

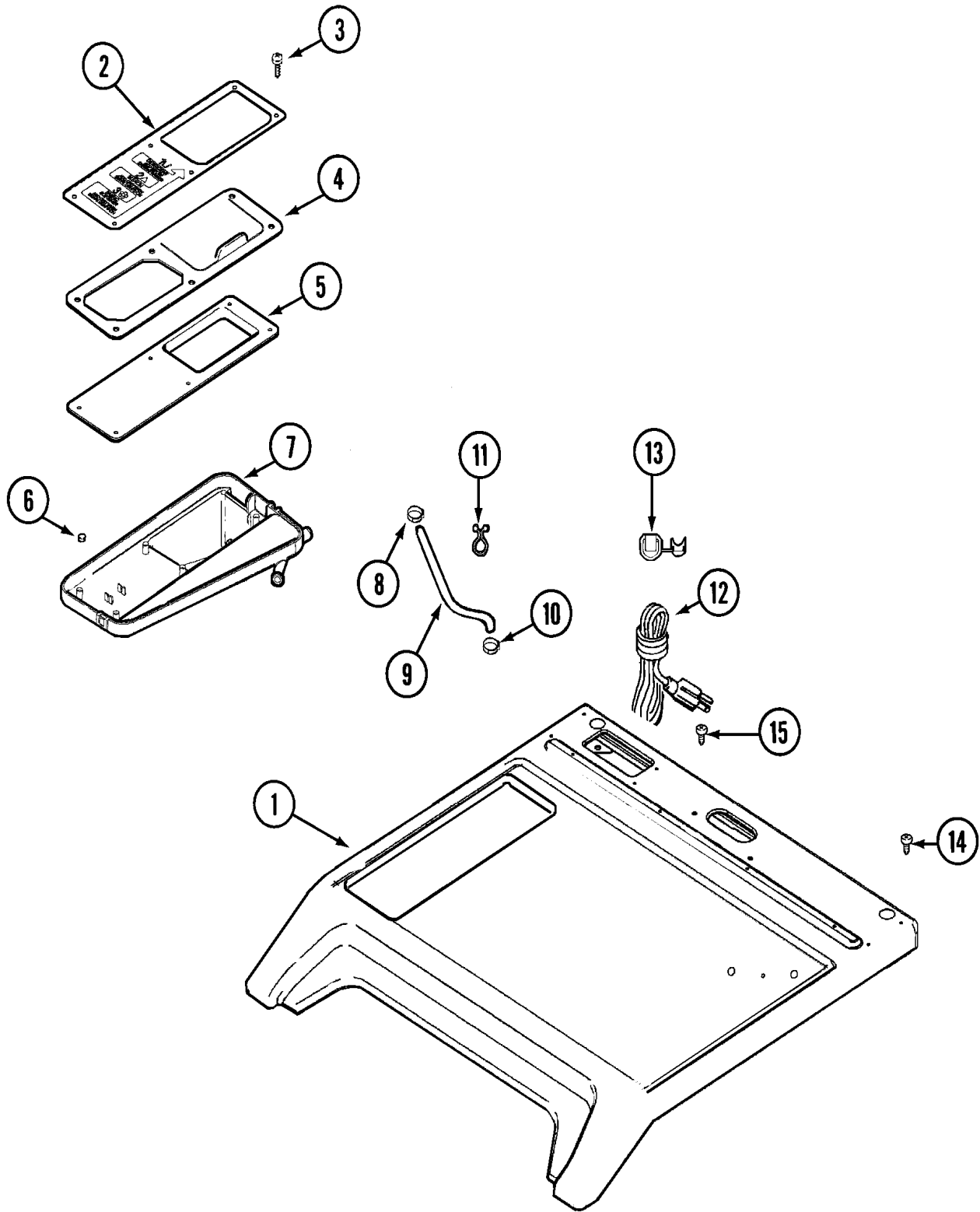


**MAH14 1 P2**



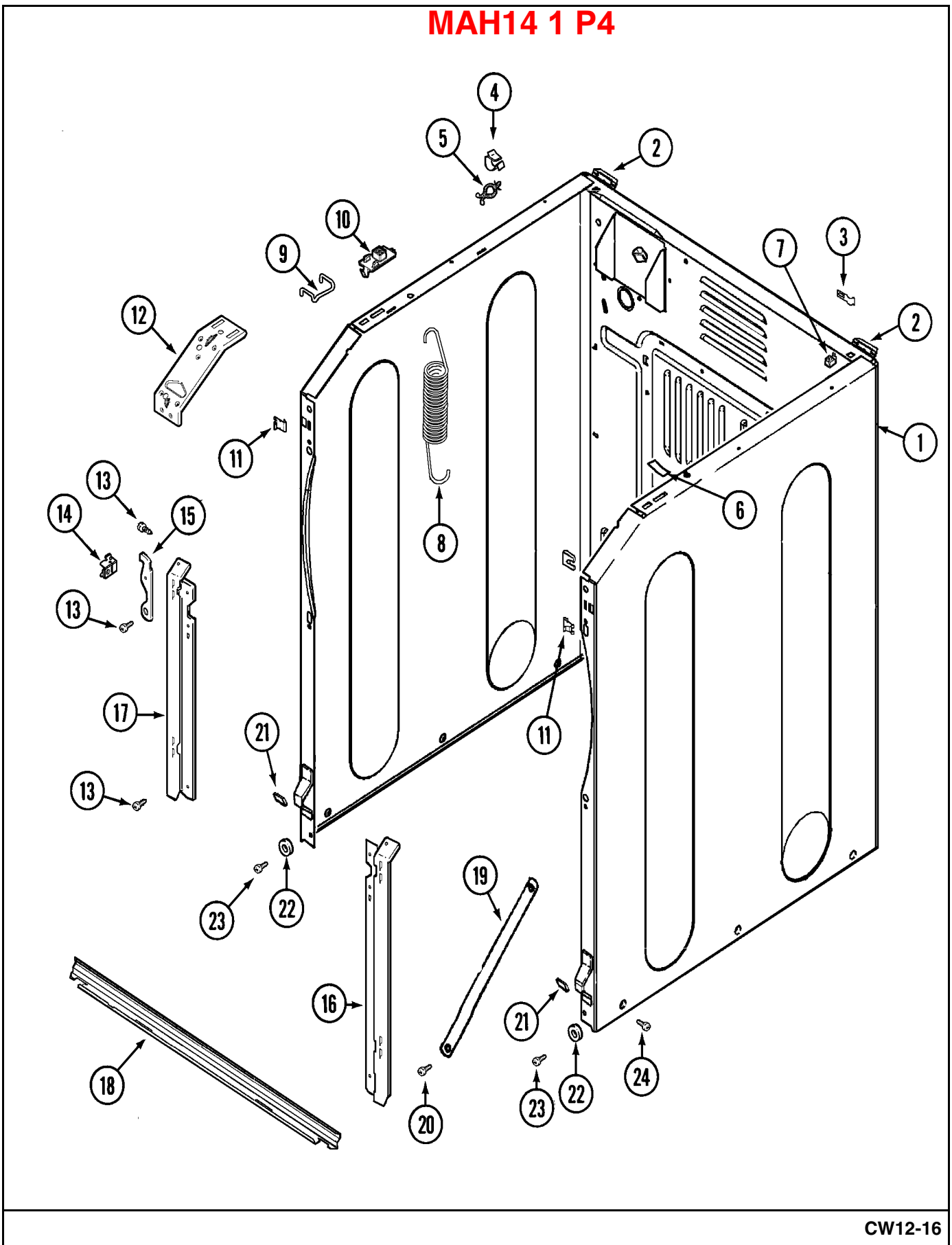
\* CONTACT YOUR COMMERCIAL LAUNDRY DISTRIBUTOR

MAH14 1 P3



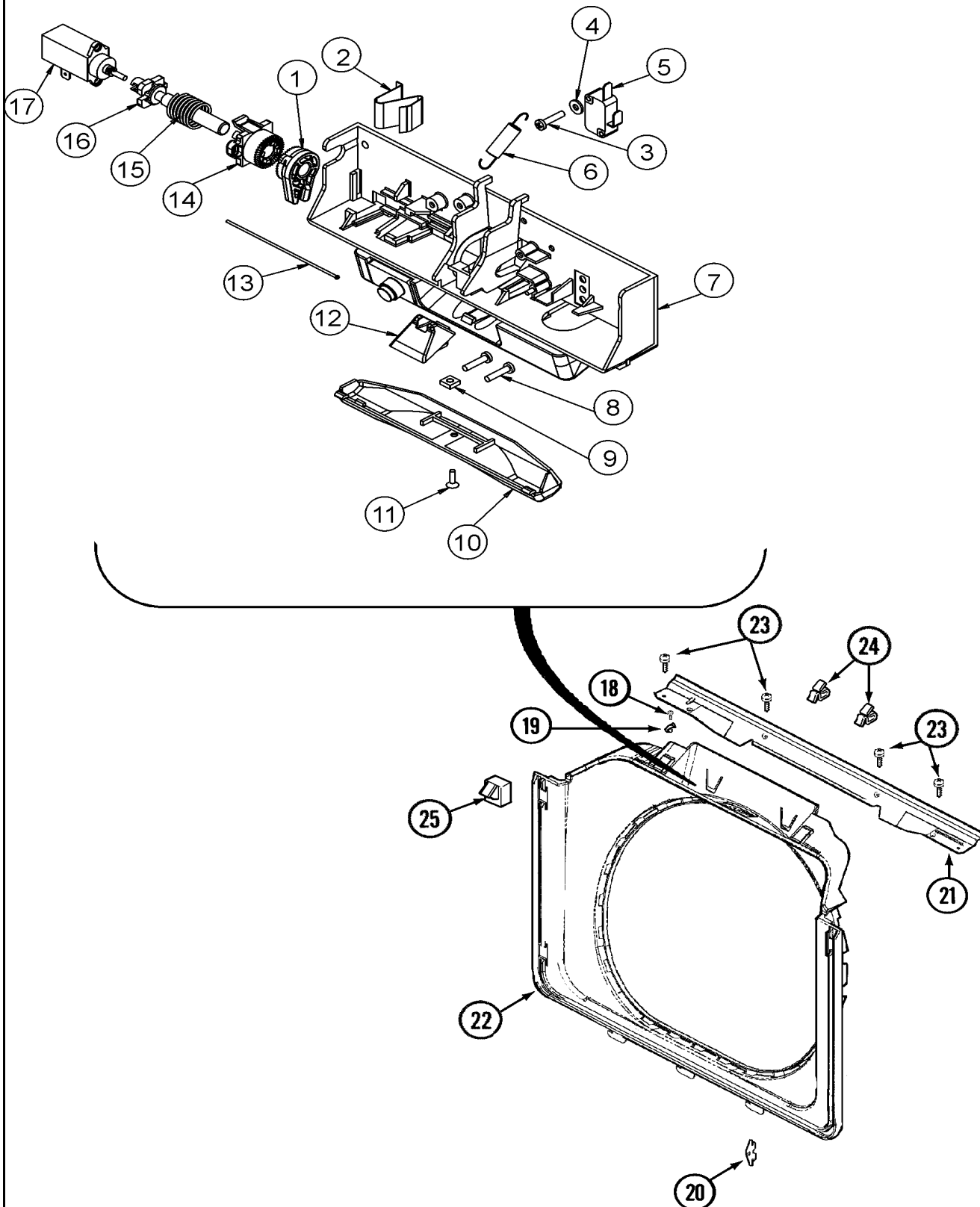
Section: CABINET-FRONT

MAH14 1 P4



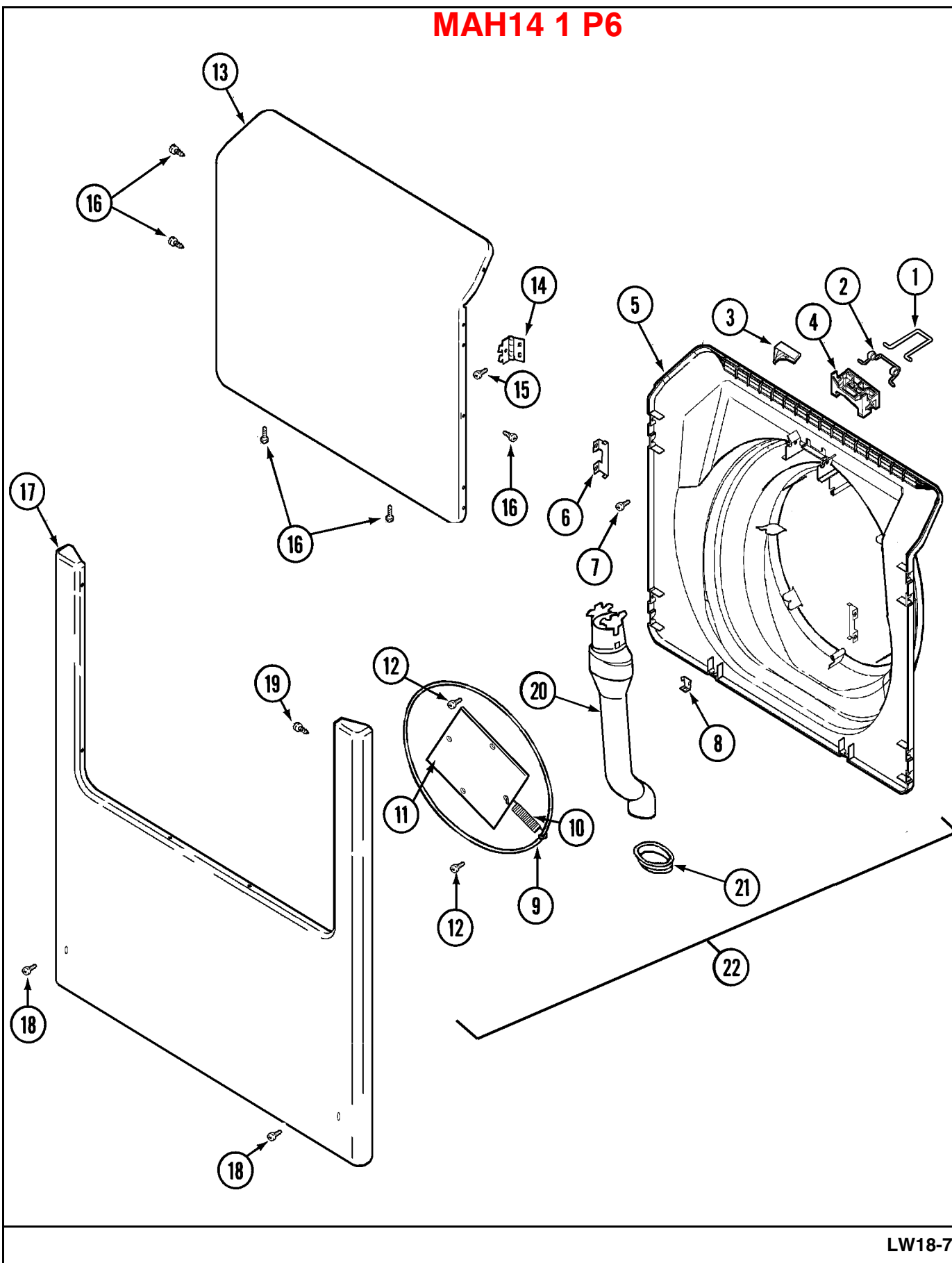
Section: DOOR SHROUD & DOOR LATCH ASSEMBLY

MAH14 1 P5



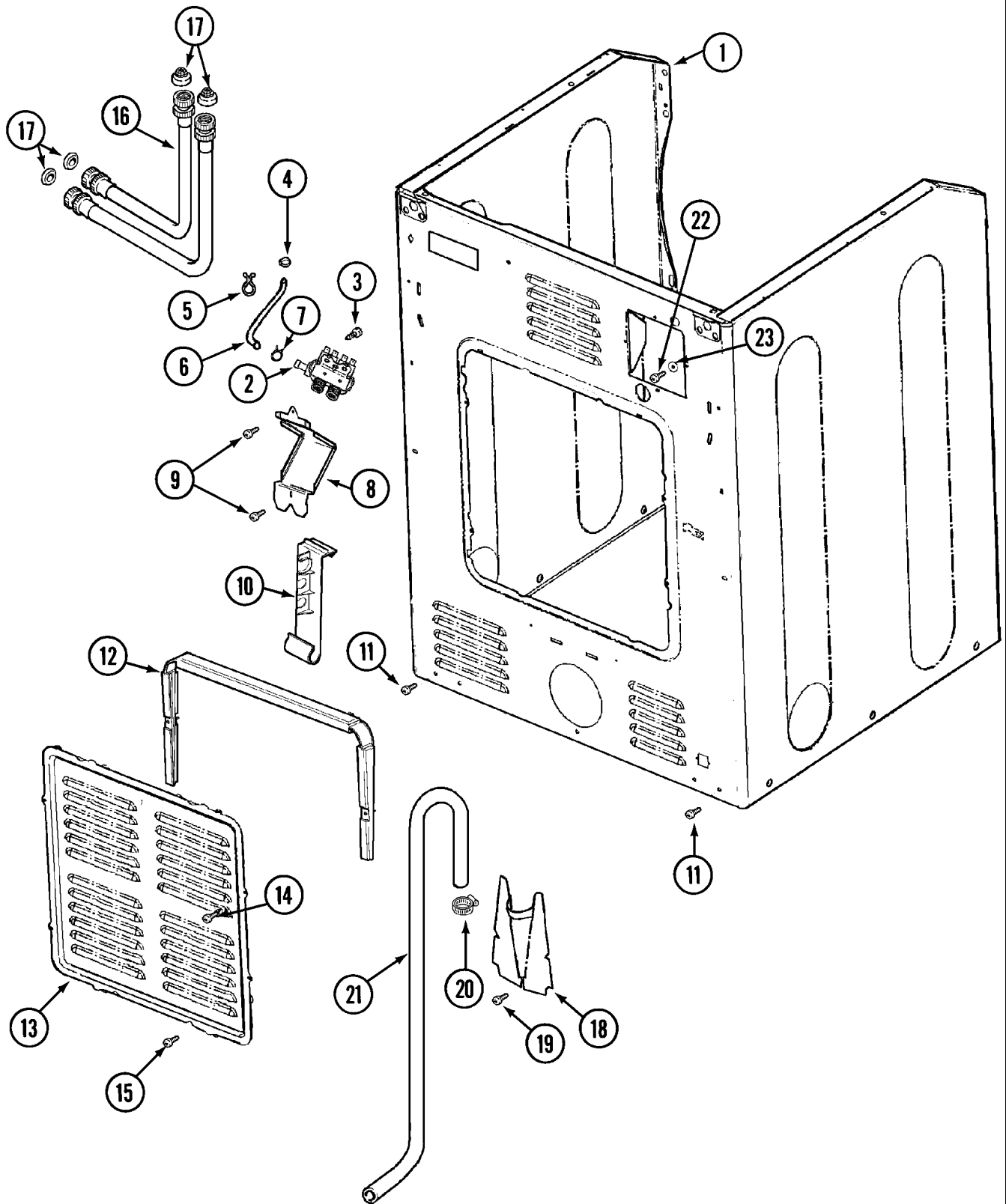
Section: DOOR & FRONT PANEL

MAH14 1 P6



Section: CABINET-REAR

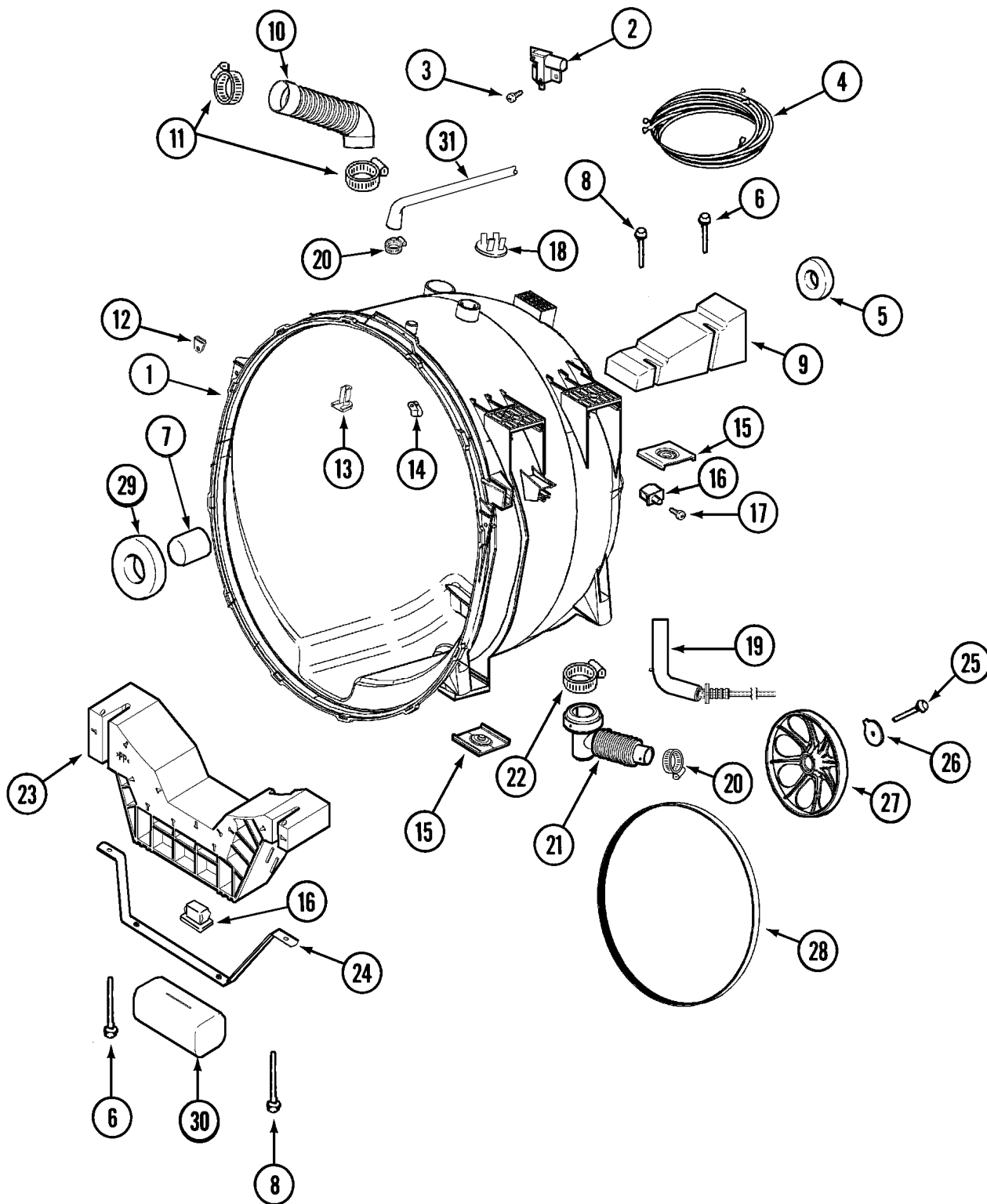
MAH14 1 P7





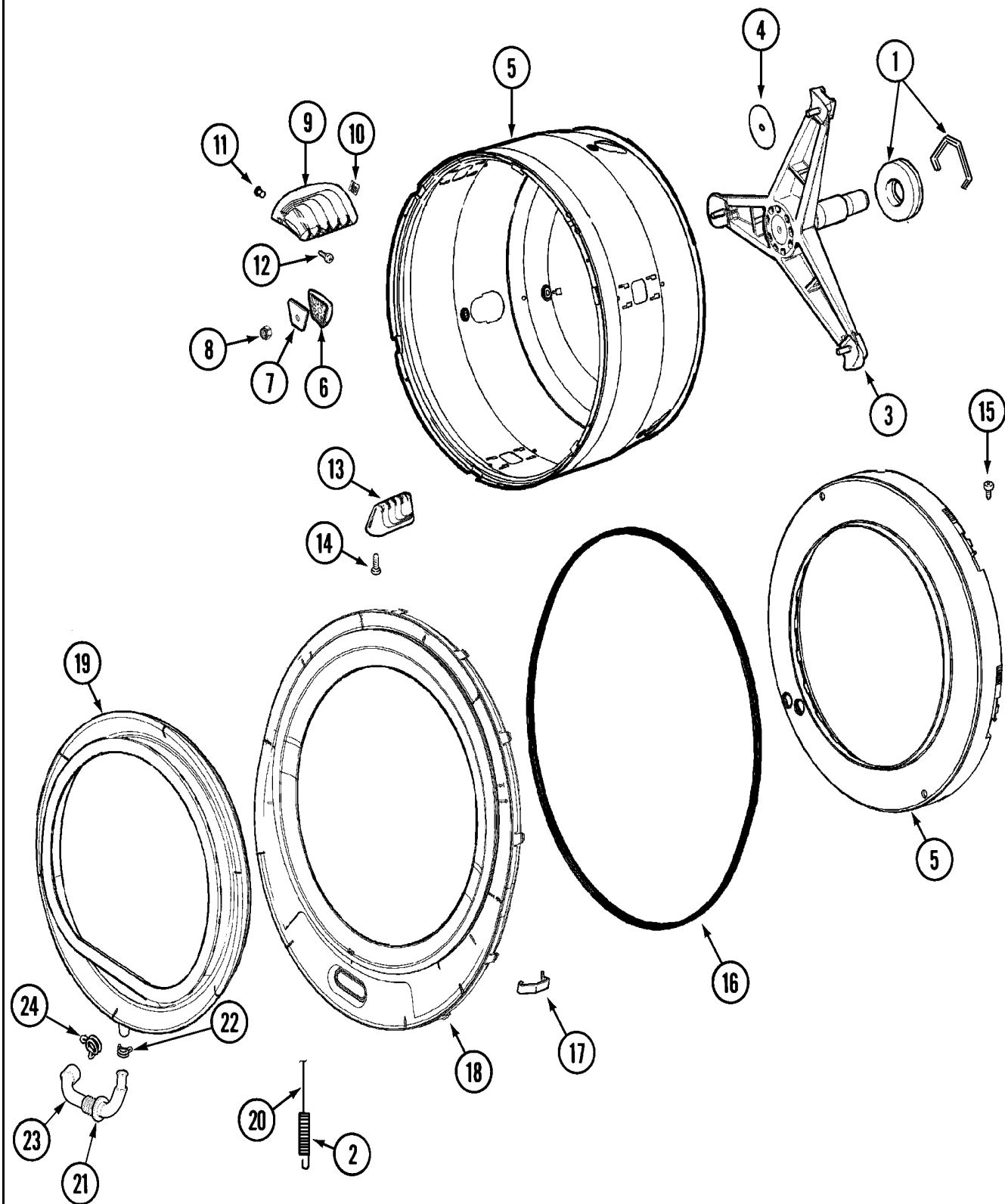
Section: OUTER TUB

MAH14 1 P8

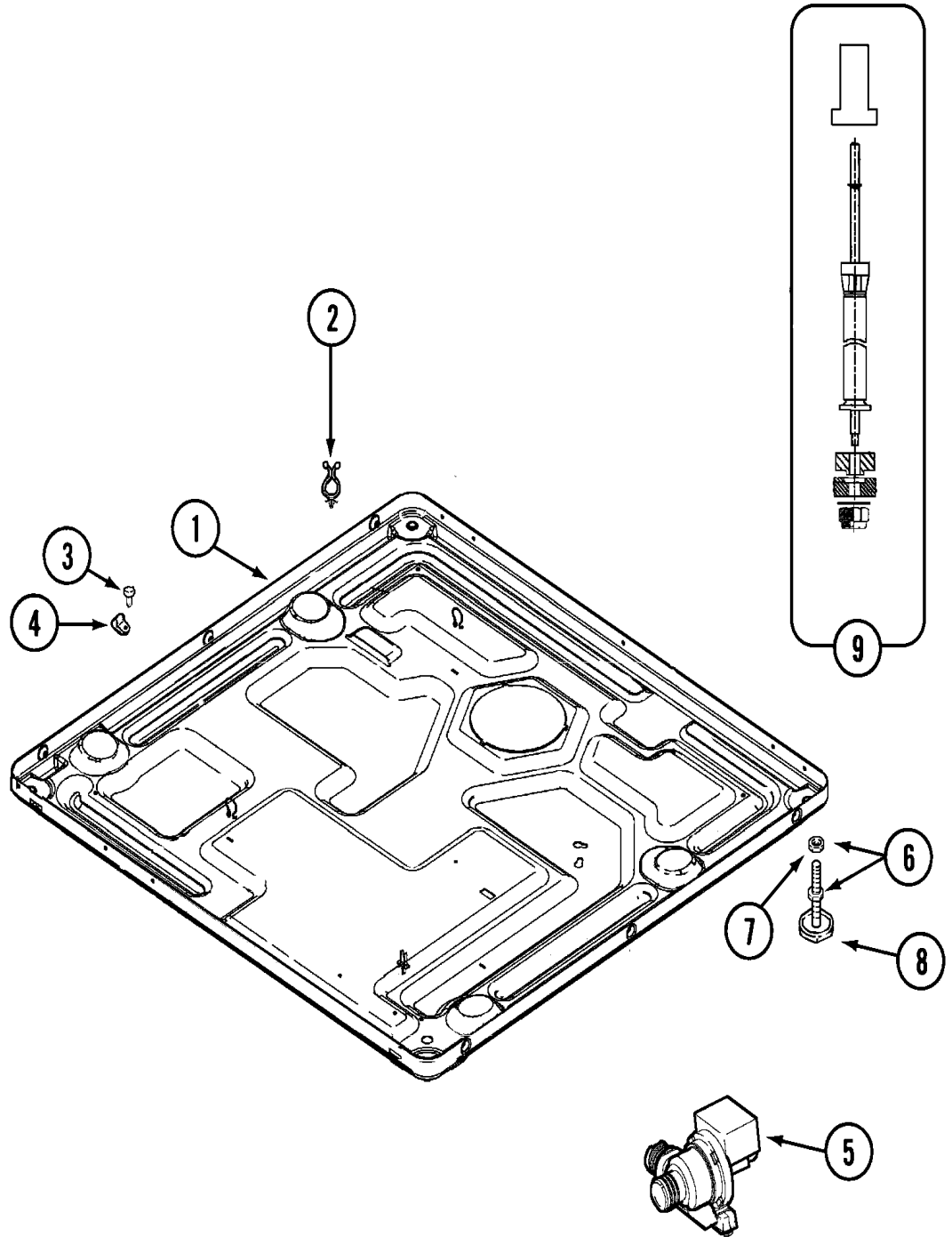


Section: SPINNER ASSEMBLY & OUTER TUB COVER

MAH14 1 P9

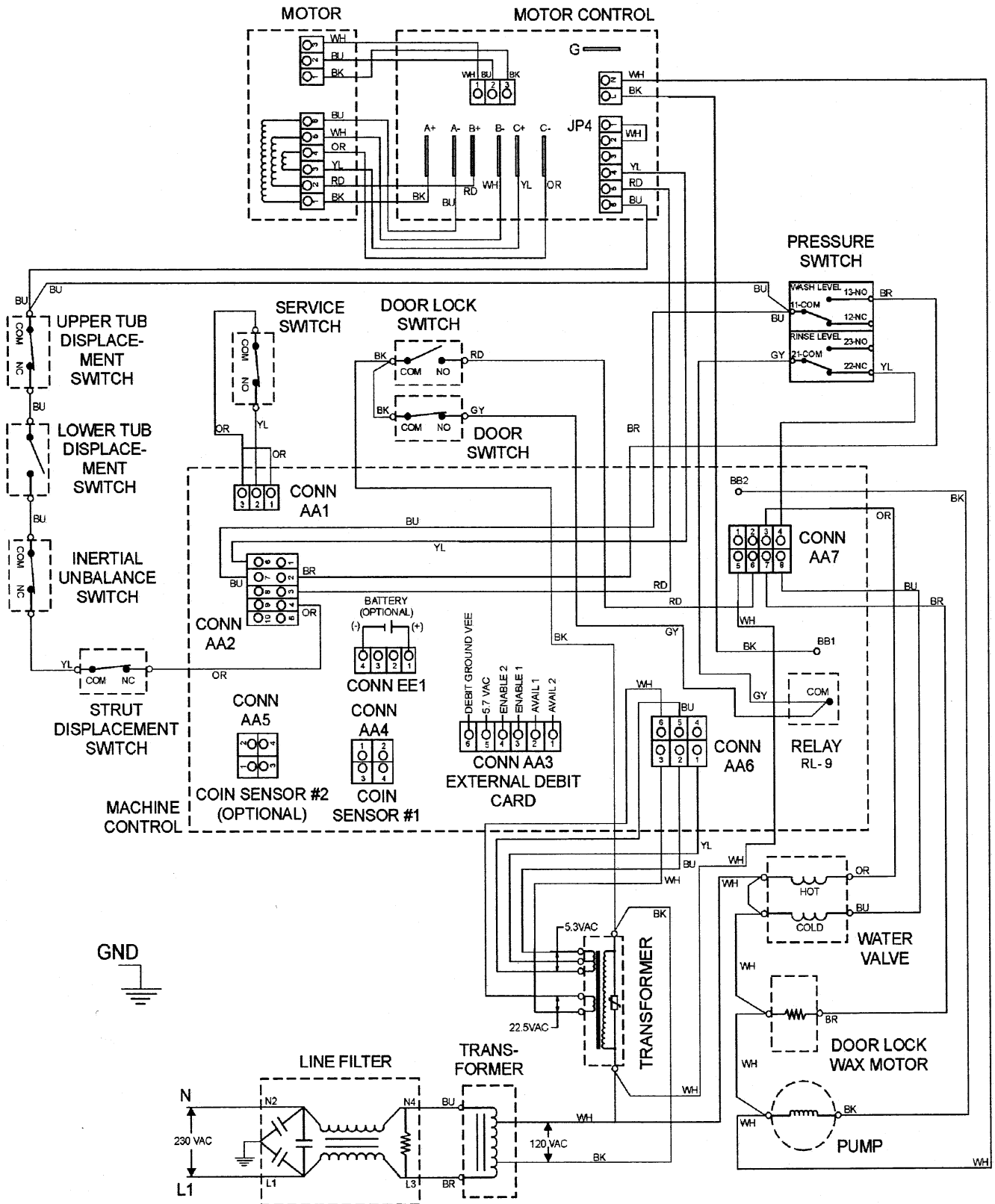


**MAH14 1 P10**



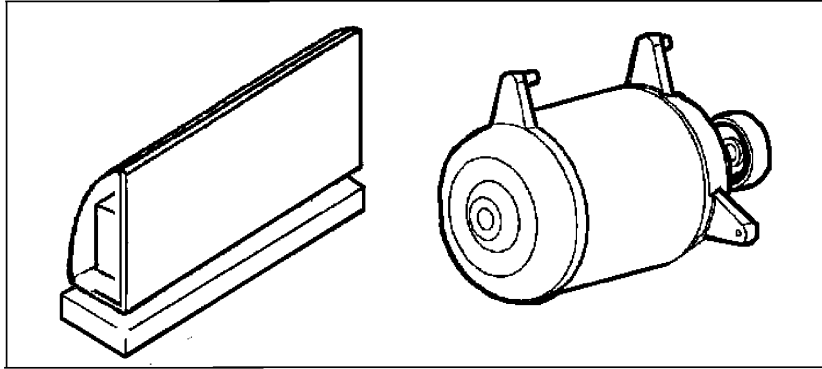
Section: WIRING INFORMATION

**MAH14 1 P11**



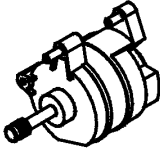
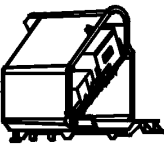
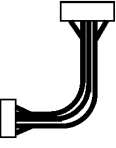
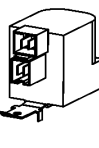
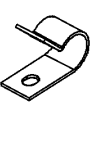

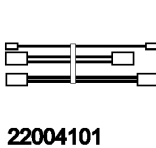

Section: MOTOR & MOTOR CONTROL

**MAH14 1 P12**



1

ITEM 1  
KIT CONTAINS:

 <p>120002040 MOTOR W/ISOLATORS</p>	 <p>22004046 MOTOR CONTROL BOARD</p>	 <p>22004047 MOTOR HARNESS</p>	 <p>22003854 AC LINE FILTER</p>	 <p>22004102 'P' CLIPS (2)</p>	 <p>22002300 SCREW 'P' CLIPS TO MOTOR</p>	 <p>22004101 LOWER JUMPER WIRE HARNESS</p>	 <p>22004103 SCREW GROUND</p>
--	---	---	--	---	--	---	--

(SEE TEXT FOR ITEMS 2, 3, 4 AND 8)

